


110°37'30"W 110°37'0"W 110°36'30"W 110°36'0"W 110°35'30"W 110°35'0"W 110°34'30"W

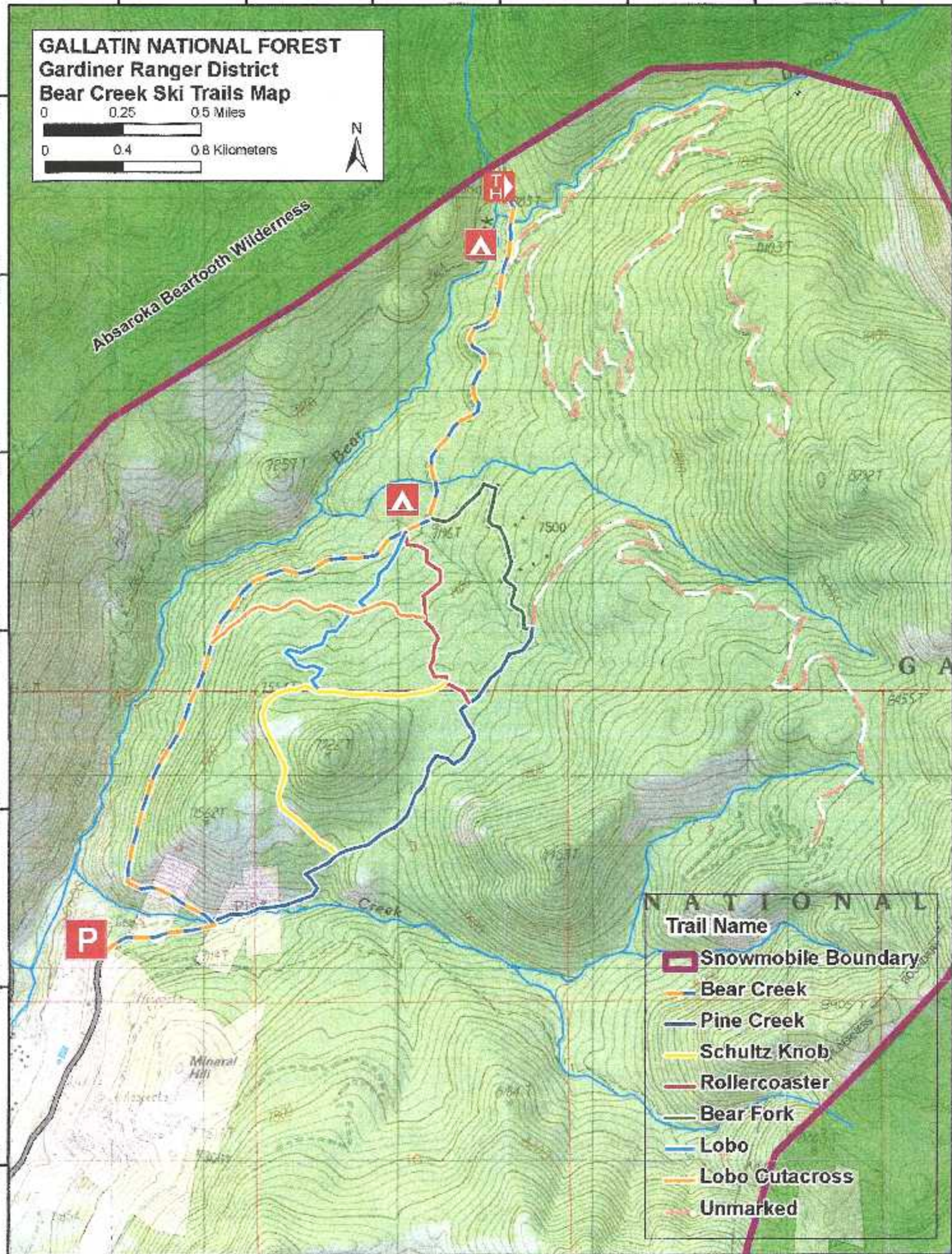
GALLATIN NATIONAL FOREST
Gardiner Ranger District
Bear Creek Ski Trails Map

0 0.25 0.5 Miles
 0 0.4 0.8 Kilometers



Absaroka Beartooth Wilderness

45°7'0"N
45°9'30"N
45°6'0"N
45°5'30"N
45°5'0"N
45°5'30"N
45°4'30"N
45°4'0"N



NATIONAL

Trail Name

-  Snowmobile Boundary
-  Bear Creek
-  Pine Creek
-  Schultz Knob
-  Rollercoaster
-  Bear Fork
-  Lobo
-  Lobo Cutacross
-  Unmarked

110°37'30"W 110°37'0"W 110°36'30"W 110°36'0"W 110°35'30"W 110°35'0"W 110°34'30"W